



“Serve the Lord with gladness.” Psalm 100:2

Oregon Leaguer

Spring 2012

“COSTUMES BRING SMILES TO FACES OF KIDS IN DOMINICAN REPUBLIC”

Women of Resurrection Lutheran Church in Florence, Oregon made many beautiful costumes for the Lutheran mission congregations in the Dominican Republic to use in their Sunday schools and Concordia Lutheran Elementary School. Acting out Bible stories is a favorite way to have the children learn and remember the truths of God’s Word. They all want a costume to wear, and to be part of the story. The making of costumes was started at the 2010 District LWML convention, and the LWML women in Florence took the patterns and some of the fabric home and continued to sew and decorate the costumes. They were delivered to Missionary Danelle Putnam last October, and many of the children had to try them on and wanted their pictures taken. A big THANK YOU ladies for the joy you have given the children and the help this is to the mission team. There is still a need for more lightweight costumes of various sizes for children and adults.



SPECIAL GIFT FUND SCHOLARSHIP AWARDED

The Special Gifts Fund Committee is pleased to announce that Faith Johnson from Klamath Falls has been awarded a \$500.00 Scholarship the fall of 2011.

Faith is the Secretary at Zion Lutheran Church in Klamath Falls. She juggles college classes with her work schedule at the church, while raising her two daughters, ages 4 and 5, alone. Faith has a love for people and enjoys helping and working with them. She is attending classes at Oregon Institute of Technology and majoring in Psychology.

Thank you to each woman who has contributed to the Special Gifts Fund. We challenge and encourage you to use the Special Gifts Fund for memorials and remembrances. Contributions can be sent to the Oregon District LWML Financial Secretary, Karen Prince at PO Box 543, Gaston, OR 97119.

Applications for the 2012 Scholarship will be accepted beginning July 2012, with the scholarship(s) awarded in October 2012. The application form is on the Oregon District LWML website. LWML societies will receive information, in the USPS mail, regarding the scholarship during the late summer months. Inquiries may be made to Rhoda Spidal, Special Gifts Fund Committee Chair by e-mail – spidalar@spidalfamily.com or by USPS mail at 2451 NW Goodin Creek Road, Gaston, OR 97119.

TABLE OF CONTENTS

Costumes Bring Smiles to Faces of Kids In Dominican Republic, Special Gift Fund Scholarship Awarded Page 1

Holy Land, Better Late Than Never!, “For Everyone...” Page 2

CONVENTION, CONVENTION, CONVENTION!
Christ our Lord...
Our Rock & Strength, “What God Promises, God Fulfills...” Page 3

Would You Like to BE on the “Move for Mite”?, Mission Grant Selection 101, 2012 Convention Pins Page 4

Special Guests for the OR Dist. Convention, Music Notes, Visit the LWML Store! More Opportunities to Serve Others and Honor our Great God!..... Page 5

Let’s Run to the Rock!, Mission Grant Proposals for 2012 Ballot Page 6

2012 Convention Highlights, OR Dist. Young Women’s Committee Page 7

HOLY LAND

The Women of Faith, Rogue River Oregon, enjoyed a Power Point presentation of the Holy Land at their February Luncheon LWML meeting. There were about 25 in attendance.

While enjoying a lunch of Chicken Fettuccine prepared by Ellen Erickson, Nancy Fritch and Marianne Dolson shared some of the photos from their recent trip to the Holy Land.

The two women were on the Concordia Seminary Ft Wayne IN Tour this past November. It was hosted by Dr. John Nordling, Greek Professor at the seminary.

While showing pictures of Caeseria, Megiddo, Qumran, Masada, and the Shepherd's Fields and other sites, the women narrated their experience adding pertinent related Bible passages.

The women were all pleased with the presentation and many remarked that many of the places had been mentioned during recent LWML Women's Bible Study's.



BETTER LATE THAN NEVER!

Trinity LWML, Bend, held their LWML Sunday on Jan. 22, with hundreds attending, two services. Ladies served as Greeters, Ushers for offering, Readers, and afterwards hosted a reception with sheet cakes, coffee, and a sit-down social hour. The bulletin covers featured the national logo and message, and the scripture serendipitously worked right into Pastor Carnahan's message about the paralytic man being let down through the roof; a child's message of the same was well-received.

The LWML had funded some four-hundred colored, 2-sided brochures featuring all the interest Mission Groups available to our women in the congregation, our Pledge & Mission Statement; they are included in our Welcome Baskets to new families and were well-received in all the mailboxes that morning, generating much interest in our display tables. Highlight of the morning, then, was the "mission fair," held during the two coffee hours in the Narthex, featuring some dozen display tables showcasing the mission opportunities and service groups going on year-long. We have a monthly day group and a night group; while attendance might top 40 between the two, countless women work with the groups listed and may never "attend" a meeting...that's because we are all women of Trinity, and busy about the Lord's work.

Exhibits included our Quilters, prayer shawls, infant layette sets for the Pregnancy resource centers, fleece dialysis blankets for the local Center, Welcome Baskets, our Parish Nurse table, the Gospel Outreach Mites table, and several poster exhibits reflecting our retreats, rallies, and upcoming Convention. Mite boxes make great table favors! We found much response from members wanting to contribute yarn, fleece, and articles for the layettes as a result of our great display. (I don't think we can ever assume year to year congregants realize all the things LWML women do, in and above raising Mites! This was great exposure for us.)

Pat Reck, Juniper Zone President

"I am not ashamed of the gospel, because it is the power of God for the salvation of everyone who believes." Romans 1:16

"FOR EVERYONE..."

"For everyone", including those with intellectual and developmental disabilities, Good Shepherd Auxiliary invites you to their Annual Celebration of God's Faithfulness in blessing their ministry of prayer and financial support for the spiritual life programs and projects of Bethesda Lutheran Communities. A goal of OR District LWML Special Ministries Committee is to equip congregations and LWML members to share the gospel message with their neighbors who have these special needs.

Please join the Celebration at Zion Lutheran Church in Corvallis, Oregon on Saturday, April 28, 2012 at 9:30 A.M. for a day of worship, learning of this special ministry, fellowship, lunch, and the opportunity to purchase items created by Good Shepherd Auxiliary members to support their ministry. (A fun auction is planned during the lunch hour.)

For information please contact Terry Putnam, Special Ministries Committee Chair at 503-842-7740 or terryatnetarts@gmail.com, Mona Fuerstenau, committee member, at Mona.Fuerstenau@mailblc.org.



CHRIST OUR LORD... OUR ROCK AND STRENGTH

2012 OREGON DISTRICT CONVENTION NEWPORT, OR

The SON will be shining as the women of the LWML Oregon District convene in Newport, Oregon for the 2012 convention.

As the convention draws near, please encourage your Society members and others in your congregations to come and learn of the joys of sharing a convention with Sisters in Christ. Pack your beach bag... and come to Newport as the LWML shares the Glory of our Lord to all along the shoreline of Oregon.

*Glenda Dougherty and Carmen Nagel
Convention Co-Chairman, 2012*

For your information:

Registration form is on the district website:

WWW.ORLWML.org, under the convention tab.

EACH REGISTRANT IS RESPONSIBLE FOR HER OWN HOUSING: Best Western – Agate Beach. 1-800-547-3310. The block of rooms will be held until May 1, 2012. Limited 'Pet Rooms' available for a one time fee of \$25.00 per pet. (Pet fee for service animals is waived)

The tradition of "going green" will be continued. Bring your favorite LWML shirt, bring your lanyard, AND bring your favorite LWML convention bag..if you have one.



What God Promises, God Fulfills Praise be to the Lord, the God of Israel, who with his hands has fulfilled what he promised with his mouth to my father David. 2 Chronicles 6:4

At the dedication of the temple, King Solomon reminded God's people that what God promises He fulfills. God does not talk meaningless talk. He does fulfill His promises. In this case Solomon says that what God speaks He fulfills with His hands. God vividly fulfilled His promise of a Redeemer for you and me in His Son, Jesus. Jesus definitely fulfils His promise with His nail pierced hands!

Again during this season of specifically meditating on Jesus life, death and resurrection, God again reinforces that He does promise and He does fulfill His promises. God does not stop though with fulfilling these promises. He continues in our everyday life to guide, direct and help us to do His will to His glory. As we prepare the activities of our OR District Convention He works in our thoughts and actions as we strive to fulfill...

Our Convention Goal: Rescued by the Lord, our Rock, we are enabled to live in His strength and service.

Our Objectives: We, the Oregon District Lutheran Women in Mission, in convention 2012, will show forth the:

- Salvation of our God
- Strength of His people
- Service of His mission

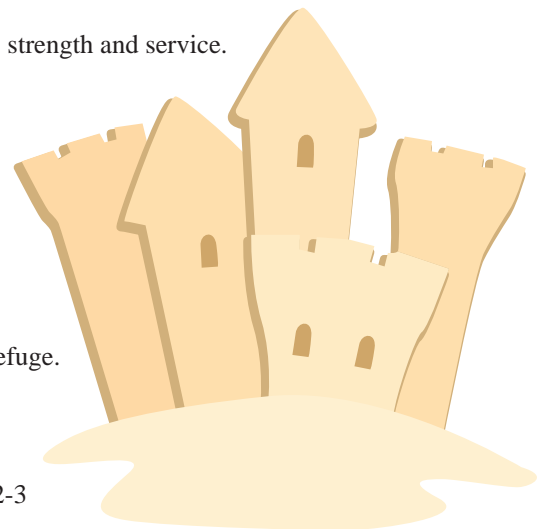
Depending on our God as expressed in our theme from Psalm 18:2

The Lord is my rock, my fortress and my deliverer; my God is my rock, in whom I take refuge.

Our Personal LWML Response:

Sing to the Lord, praise his name; proclaim his salvation day after day.

Declare His glory among the nations, His marvelous deeds among all peoples. Psalm 96:2-3



*Cynthia Behrens
President LWML OR District*

2012 OREGON DISTRICT CONVENTION NEWPORT, OR

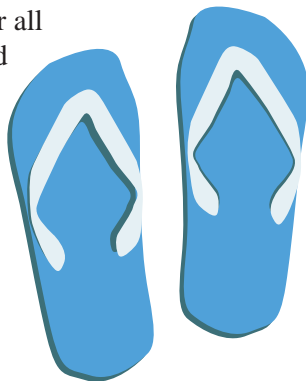
"Out of the Box... Onto the Sand"

Would You Like to BE ON THE "MOVE FOR MITES"??

At Convention in June our 'Mitey Walk' will take on a new dimension. In order to involve more participants we changed things a bit to fit each person's needs or likes. So to change would you like to BE on the move for mites to – I AM on the move for mites.....on your registration check the box "On the Move for Mites and Missions and pay the \$10.00 fee. You will receive a list of ideas of what you can do for mites. Examples include swim laps in the hotel pool or walk the halls. My favorite is "roll over in bed early Saturday morning and don't get up to walk"! You will be on your honor and have from Thursday through Saturday noon to complete your MOVING FOR MITES activity. You will also receive a form to use to collect pledges/donations toward the mites movement. The \$10.00 fee for the movement will go directly to mites.

In keeping with the tradition of "going green"- bring a "Mitey Walk" shirt from a previous convention or just a favorite comfortable shirt. We wish to give everyone the opportunity to support the "On the Move for Mites" activity (from the comfort of their room or convention seat). To do this send an explanation of your individual MOVING FOR MITES activity along with your registration to Rhoda Spidal. If you have already registered for On the Move for Mites and Missions send a note telling of your planned activity to Rhoda. These will be posted by the Registration table for all the convention attendees to see and pick one or two they would like to support with a pledge/donation. The deadline for all pledges and donations to be paid will be 1:00 pm Saturday.

Let's have fun with Being "On The Move For Mites and Missions"



MISSION GRANT SELECTION 101

As your delegate prepares to represent your society at the Oregon District LWML convention in June and vote on the proposed mission grants that our mites will fund, the Gospel Outreach Committee would like to suggest that all members of your group be involved. Together, study and discuss the proposed grants and pray for each as you decide for which grants your delegate will vote. The following guidelines could be used.

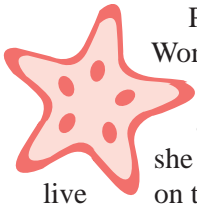
1. Open your Bibles and see what God's Word has to say about our involvement in missions.
 - a. Discuss why we send out missionaries: Matt 28:18-20; Romans 10:13-15, 17
 - b. Consider the call of missionaries (what their "job" involves): Acts 26:17b-20
 - c. What support was given the first missionaries? Acts 15:13; Acts 21:5; Acts 27:3; Phil.4:10-20; Titus 3:13; 3 John 1-8
2. Pray for God's guidance and discernment.
3. Thoroughly read each grant and discuss each, considering:
 - a. Outreach:
 - 1) What is the outreach potential of this mission?
 - 2) How many believers and the lost will be hearing the Gospel?
 - 3) Is encouragement of others involved?
 - b. Longevity of this mission and potential resulting missions:
 - 1) Is the grant equipping people so that the mission will be on-going?
 - 2) How will relationships that the Holy Spirit can use, be built or enhanced?
 - 3) Are Jesus' disciples actively teaching others to become disciples too?
4. Have each member vote, and tally votes so your delegate will be voting the desire of the society members.
5. Remember to pray for the voting body at the convention, that our mites will support the grants that the Lord knows most need the funds.

2012 Convention Pins

2012 Conventions pins will be available in a limited number. If you would like to have a 2012 Oregon District Convention pin, please e-mail Carmen at arcticcats@aol.com to place your order. The cost is \$5.00/pin which will be collected when you register.

2012 OREGON DISTRICT CONVENTION NEWPORT, OR

SPECIAL GUESTS FOR THE OREGON DISTRICT CONVENTION:



Phyllis Wallace hosted the Woman to Woman® radio talk show, produced by Lutheran Hour Ministries on 400 stations, XM radio and the web. For 20 years and 1400 shows she encouraged listeners to come meet Jesus and live on the edge. Her counseling background enabled her to address women's challenges from a Biblical perspective in areas of health, performance and relationships with her guests. Previously, from 1980-90 Phyllis taught the Wednesday Woman Bible study at Good Shepherd Lutheran Church in Collinsville, IL for 100 women from 14 different church backgrounds. Little did she know, when she spent that time with Jesus, He was grooming her for broadcasting in the years ahead!



Marilyn McClure, Vice President of Gospel Outreach has been involved in mission work for nearly her entire life. She and her husband, Garry, have worked in Hispanic ministry for the last 42 years. Marilyn hopes that the LWML will be an organization where every woman in our churches, regardless of ethnicity, age, or location, is welcome and can find a place where she can be inspired and uplifted as she serves the Lord. Rev. Paul Linnemann, President of the Northwest District – LCMS, will be the Proclaimer for the Friday evening opening worship service.

The Great LWML Oregon District Counselors – Pastor Daniel Faragalli and Pastor Roger Blesi. They will be leading the Bible studies and sharing their various talents throughout the convention weekend.

MORE OPPORTUNITIES TO SERVE OTHERS & HONOR OUR GREAT GOD!

2012 Convention Offerings:

- #1 Offering during Opening Service 2012-2014 Mite Goal
- #2 Offering ~ All Nations Lutheran Church, Newport, OR
(to use in their ministry as they determine)
- #3 Offering ~ Concordia Seminary, St. Louis, Food Bank

MUSIC NOTES:



"And above all these put on love, which binds everything together in perfect harmony."

Colossians 3:14

"Sing for joy to God our strength; shout aloud to the God of Jacob! Begin the music, strike the tambourine, play the melodious harp and lyre." Ps. 81:1,2

There are two opportunities to share your talent with the Convention...

The Convention Choir. Pam Bridgehouse of Trinity, Mt. Angel, OR will be the music leader for our convention and has planned a mix of musical styles that will be enjoyable to everyone. Please note there is a "Convention Choir box" on the registration form.

AND...Instrumentalists for Convention orchestra: If someone in your society or congregation plays a stringed instrument, brass, or woodwind, we'd love to have them help with Convention music. Musicians should be at intermediate to advanced competency, and should be able to sight-read. Parts will be sent out about four weeks before the Convention, and learned independently before arriving. We will get the music together in one or two brief rehearsals. We are striving for a beautiful first-fruits musical offering to assist in worship during the Friday evening Holy Communion service.

Please contact Pam Bridgehouse by email if you would like to participate in the music of the convention: bridgehousepam@aol.com.

VISIT THE LWML STORE!

Are you an online shopper? Or, perhaps you prefer physically going to a store? Whichever way you prefer, Oregon District LWML Convention 2012 will offer you both options. Computers will be available for you to browse, select, and purchase fabulous LWML items using your debit or credit card. Use your LWML catalog (included in your convention packet) to window shop, then visit us in the Cove Room to place your order. A simple, convenient, secure, and very easy way to shop.

The LWML store will also have some sample items on site for sale. How can you resist picking up an inspirational devotion for a friend, a Mustard Seed packet to give as a wedding gift, a Healing Scripture bookmark for a hospitalized family member... the ideas are endless and LWML has the perfect item for your use. See you at the store!

2012 OREGON DISTRICT CONVENTION NEWPORT, -OR

LET'S RUN TO THE ROCK!

In June, the Oregon District LWML will hold their convention in Newport, Oregon. The theme is "Christ our Lord..our Rock, our Strength". The Oregon Coast is an awesome place to celebrate and honor the work of the Oregon District LWML! While we are able to see the majestic workmanship of our Lord as the waves crash onto the rocks, we will also be able to celebrate with work of the women of the Oregon District with Jesus as our servant leader.

As VP of Servant Resources, I have been honored to see firsthand the willingness of women (and men) in the Oregon District, to carry out the LWML vision of our newly elected national LWML President, Kay Kreklau. Her vision is:

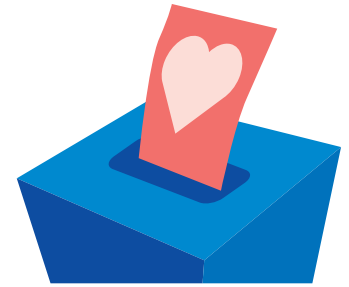
*We are the Women of LWML
-serving the Lord with Gladness
We are Women that will:
-learn from and live for Jesus
Take joy in being His voice, hands and feet
Focus on missions, not meetings.*

With Jesus as the ultimate example of servanthood for all Christians, we, have the joy of sharing His mission and vision as we do His work as we are reminded in 2 Corinthians 4:5 MSG, "Remember, our Message is not about ourselves; we're proclaiming Jesus Christ, the Master. All we are is messengers, errand runners from Jesus for you".

So, hasten your way to Newport, Oregon. Come and rejoice! Let's proclaim Jesus Christ on the rocks, on the beaches, in the waves and to all the people! I can hardly wait to run to the Rock! See you there!



MISSION GRANT PROPOSALS FOR 2012 BALLOT



1. Recording Ministry ~ Bend, Oregon \$5,000
2. TLC Child Development Center ~ Mt. Angel, Oregon \$3,000
3. The Gospel for Latino People \$6,500
4. Faithful Savior Video Outreach Ministry ~ Portland, Oregon \$6,500
5. Project "GO" (Gospel Outreach) - Share Jesus..... \$5,000
6. Rural Outreach ~ Burns, Oregon \$6,020
7. Seeking and Finding - Beyond Soccer to Eternity
Servant Event ~ Portland, Oregon \$5,000
8. King's Kids Hispanic Outreach Ministry ~ Eden, Idaho \$6,500
9. Religious Curriculum "One in Christ" ~ Coos Bay, Oregon \$2,800
10. Production Cost of Two Oregon District Lutheran Braille Workers' Centers ~ Portland, Oregon..... \$6,000
11. Transforming Campus Ministries ~ Oregon \$3,600
12. Unequally Yoked – PABLO \$5,000
13. Dream Catcher Youth Group ~ Montana \$5,000
14. All Around the Neighborhood: Lutheran Books for Immigrants \$4,000
15. Developing Religious Life Curriculum for God's People with Intellectual and Developmental Disabilities \$6,500
16. Nord Est Haiti Lutheran Mission, Boys' Orphanage Kitchen \$6,500
17. Making Melody in Their Hearts to the Lord - A Revised Shiyeyi Hymnal, Phrasebook and Calendar \$3,000
18. Joseph Food Security Project ~ Ghana \$6,000
19. International (Partner Church) Graduate Student Support at Concordia Seminary ~ St. Louis, Missouri \$6,500
20. St. John Lutheran School Library Project ~ Eagle Point, Oregon \$6,500
21. Restoration Project ~ Rogue River, Oregon \$6,500
22. Concordia Theological Seminary - Food and Clothing Co-Op ~ Fort Wayne, Indiana \$6,500

2012 OREGON DISTRICT CONVENTION NEWPORT, -OR

2012 CONVENTION HIGHLIGHTS*

Thursday: May 31, 2012

- 1:00-4:00 pm Executive Committee Meeting
- 5:00 pm Board of Directors supper
- 6:00 pm OR District LWML Board of Directors Meeting

Friday: June 1, 2012

- 7:00 am Set-up
- 10:00 am Registration Opens
"On the Move for Mites" Begins
- 1:00-4:30 pm Banner practice, Choir practice, Tellers meeting,
Delegate orientation, Mission displays,
Ingathering and sorting, Candidates meeting
- 6:30 pm Opening Celebration Communion Service
Ecclesiastical Processional: All Pastors Present
NW District President, Rev. Paul Linnemann, proclaimer
LWML Counselors & Host Congregation Pastor, assisting
- 8:30 pm Opening of convention
LWML Representative
Vice President of Gospel Outreach: Marilyn McClure
- 9:15 pm President's Reception – All welcome
Meet the Candidates, YWRs, Guest speakers

Saturday: June 2, 2012

- 7:45 am Celebration Singing
Processional
Bible Study: OR District LWML Counselors
Business meeting
Mission Projects Presentation & Balloting for Mission Grants
Introduction of Candidates and Balloting
- 12:00 pm Box lunches
- 1:15 pm Bible Study: Pastoral Counselors
LWML Presenter: national
VP of Gospel Outreach, Marilyn McClure
Business Meeting
- 6:00 pm Dinner
Guest Speaker: Phyllis Wallace
Rocking

Sunday: June 3, 2012

- 8:00 am YWR-Teen Introduction
Ingathering Dedication Devotion
Closing Business
- 10:45 am Worship Celebration
New Officer installation
Sending ALL out to the Mission Field
- 12:00 pm Adjournment



* This is the first convention schedule of events and the final may be different.

THE OREGON DISTRICT YOUNG WOMEN'S COMMITTEE

"Have I not commanded you? Be strong and courageous. Do not be terrified; do not be discouraged, for the Lord, your God, will be with you wherever you go (or whatever you do - added by YWC)." Joshua 1:9

The Oregon District Convention (June 1-3, 2012 - Newport, OR) is fast approaching. Preparations are being made but without YOU, success is in question! Don't let doubt or fear get in the way of your decision to participate. As Joshua reassures us in the verse quoted above, God will be with YOU - each and every step of the way. Therefore GOD and your sisters on the YWC are CALLING all: YOUNG WOMEN (ages 18-35) - who are willing to serve their Zones as a representative (YWR). Contact your Zone President to offer your services. She has the OR District YWR guidelines and application form or check out www.orlwml.org. Each Zone decides at their upcoming Zone Rally (March or April) who will represent them so be prompt and get your name in the hat quickly!

YOUNG WOMEN - who do not wish to be a YWR but still want to see what the OR District LWML is all about. We encourage you to come join us and participate in the convention events the YWC has planned. You will have a terrific time getting to know other young women from around our beautiful state. Registration due May 1, 2012.

TEENS (ages 11-17) - We want you to attend so you can learn more about the OR District LWML, get to know other teens and young women, and have a spiritually fun filled weekend. Registration due May 1, 2012.

MENTORS - Any LWMLer is encouraged to volunteer and mentor either a YWR, Teen, or YW. Please contact Jean Marie Herkamp (ajherkamp@onlinenw.com) for more information or any questions. The term is from convention to convention (2012-2014). The convention schedule is still tentative but here are a couple things you YWRs, YWs, and Teens need to know:

Friday: June 1, 2012

- 10:00 am - Registration Opens
- 12:00-1:00 pm - In house servant event with Human Care Department
- 1:00 pm - Banner Practice
- 2:00-3:00 pm - In house servant event with Human Care Department
- 3:00-5:30 pm - YWR/YW/Teen Social Get Together/Swim Time/Meal
- 6:30-9:00 pm - YWR/YW/Teen join the congregation for open worship
Teens/YWs please attend.
- 9:15 pm - Meet the OR District Candidates/YWRs/Guest Speakers

Saturday: June 2, 2012

- 8:00-12:00 noon - YWRs sit with Zone Delegation.
Teens/YWs please attend.
- 12:00 noon - Meet with National LWML guest, Marilyn McClure
- 1:00-4:00 pm - YWRs sit with Zone Delegation.
Teens/YWs please attend.

Sunday: June 3, 2012

- 8:00-12:00 noon - Opening devotions and Ingathering dedication (YWRs & Teens participating)

Please check out our website, www.orlwml.org, as it has the convention registration forms, Zone YWR guidelines,, Zone YWR applications forms, and much more.

REMEMBER - "I can do everything through Him who gives me strength." Philippians 4:13



Oregon District LWML Convention 2012 – June 1-3, 2012

Best Western Plus Agate Beach Inn
3019 North Coast Highway
Newport, Oregon 97365

Revised
January 28, 2012

“CHRIST OUR LORD...OUR ROCK AND STRENGTH”

“The Lord is my rock, my fortress and my deliverer; my God is my rock, in whom I take refuge. He is my shield and the horn of my salvation, my stronghold.” Psalm 18:2

REGISTRATION FORM

Please print carefully- especially your e-mail address

Each registrant should fill out a separate form

Name: _____ Address: _____

City: _____ State: _____ Home Phone: _____

E-mail: _____ Church: _____ City: _____

LWML Society: _____ Zone: _____ District: _____

I will be attending the convention as: (Please check appropriate boxes below)

<input type="checkbox"/> FIRST Time Attendee	<input type="checkbox"/> LWML Delegate	<input type="checkbox"/> Alternate	<input type="checkbox"/> LWML member or guest/family member
<input type="checkbox"/> District Board of Directors (voting)	<input type="checkbox"/> District Special Appointed Personnel and Committee Members (non-voting)	<input type="checkbox"/> Young Woman Representative (YWR)	<input type="checkbox"/> Past District President
<input type="checkbox"/> Teen LWML (FISH)	<input type="checkbox"/> Exhibitor		
REGISTRATION includes meal package.....			\$125.00

Meals include: Saturday Breakfast Buffet, Lunch, Dinner and Sunday Breakfast Buffet

Regular Vegetarian Special Needs _____

<input type="checkbox"/> Clergy (Registration Fee waived – Special meal rate for Pastors ONLY)	\$ 62.00
<input type="checkbox"/> LWML member or guest attending Saturday ONLY (Does NOT include meals)	\$ 70.00
<input type="checkbox"/> BANQUET ONLY	\$ 35.00
<input type="checkbox"/> “ON THE MOVE” FOR MITES AND MISSIONS	\$ 10.00
<input type="checkbox"/> SWINGING FOR MITES (Golf Tourney Friday morning- Green Fees not included).....	\$ 10.00
TOTAL AMOUNT ENCLOSED	<input type="text"/>
LATE FEE - If registration is postmarked AFTER May 1, 2012 - add \$15.00 to total	

CONVENTION CHOIR: I wish to sing: 1st Soprano 2nd Soprano Alto

REGISTRATION DEADLINE: May 1, 2012

Registration Questions:
Rhoda Spidal: 503-662-3434
Email: spidalr@spidalfamily.com

Registration confirmation will be sent
By e-mail for those who list their e-mail
address.

**PLEASE MAKE A COPY OF THIS
FORM PRIOR TO MAILING**

Make checks payable to
OREGON DISTRICT LWML

Mail to:
Rhoda Spidal
PO Box 543
Gaston, OR 97119

**PLEASE BOOK YOUR OWN
HOTEL RESERVATIONS:
Best Western – Agate Beach
1-800-547-3310
Note you are with the
Lutheran Women’s
Missionary League**

**Room Rates:
Double Occupancy:
Ocean View \$119+tax
Hillside View - \$99+tax
Each additional person
in the room-\$10 per night
Book by May 1, 2012**